

## Section 405

### Installation of Fixtures

Plumbing Inspector  
Olean Municipal Building, Room 212  
P.O. Box 668, 101 E. State St.  
Olean, New York 14760 (716) 376-5683, (716) 376-5707 (fax)

**405.3 Setting.** Fixtures shall be set level and in proper alignment with reference to adjacent walls.

**405.3.1 Water closets, urinals, lavatories and bidets.** A water closet, urinal, lavatory or bidet shall not be set closer than 15 inches (381 mm) from its center to any side wall, partition (measured from the inside), vanity or other obstruction, or closer than 30 inches (762 mm) center-to-center between adjacent fixtures. There shall be at least a 21-inch (533 mm) clearance in front of the water closet, urinal or bidet to any wall, fixture or door. Water closet compartments shall not be less than 30 inches (762 mm) wide and 60 inches (1524 mm) deep (see Figure 405.3.1).

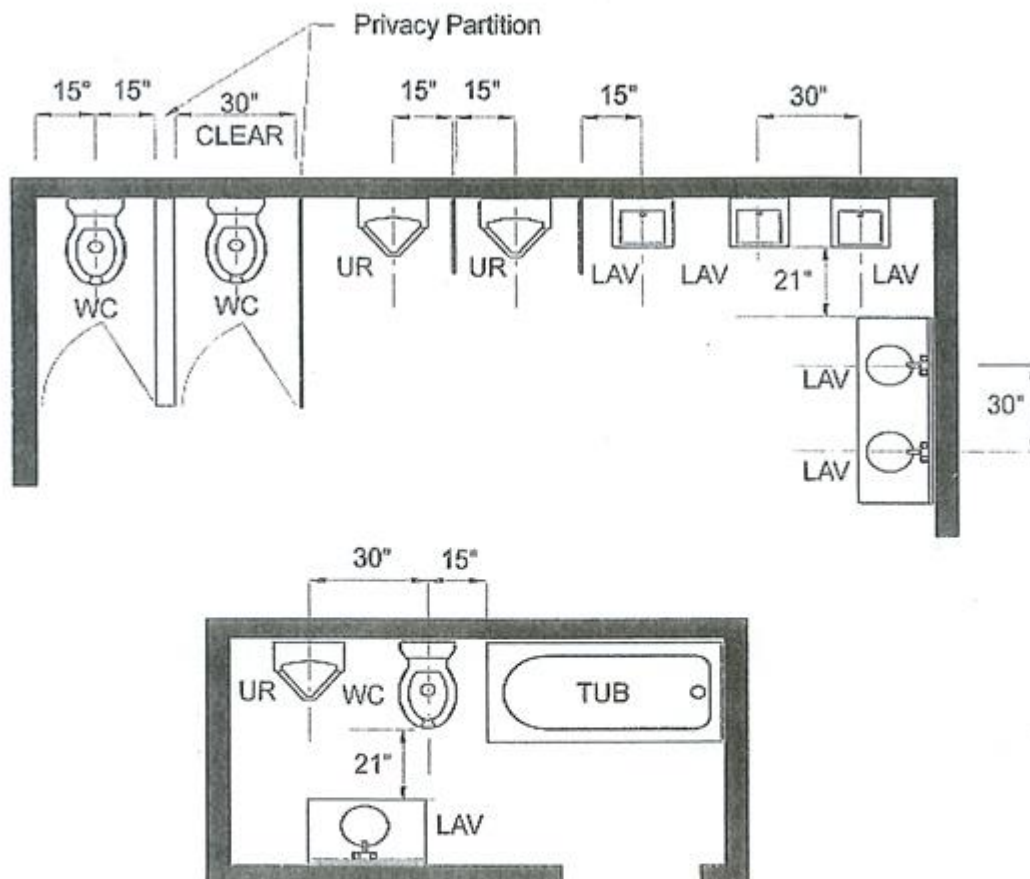


FIGURE 405.3.1  
MINIMUM FIXTURE CLEARANCES